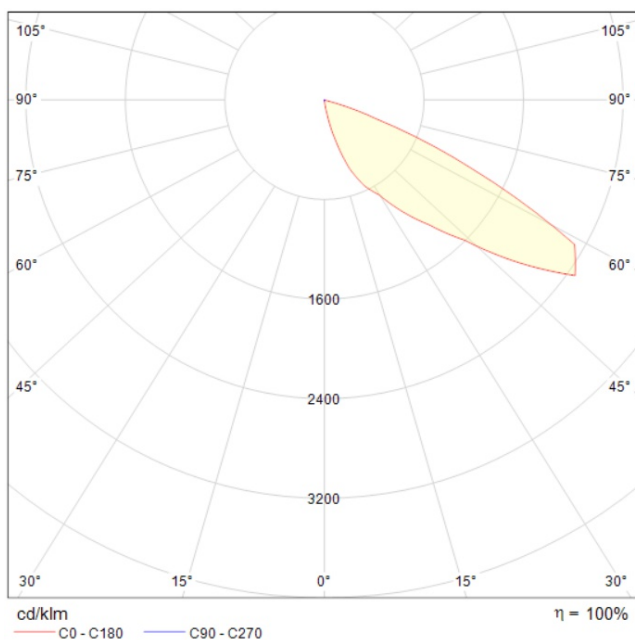


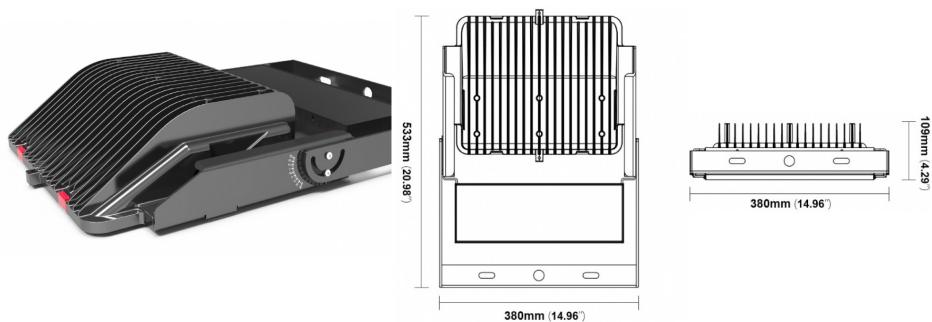
specifikation

Ljuskälla:	LED
Matning:	230V till driver
Färgtemperatur:	5000K, 4000K, övriga vid förfrågan
RA-index:	Ra70, Ra80, Ra90 vid förfrågan
IP-klass:	IP65
Livslängd:	>50 000 timmar
Vindyta:	0.075 – 0.125m ²

ljusfördelning

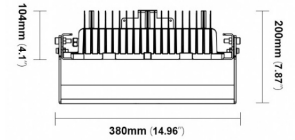
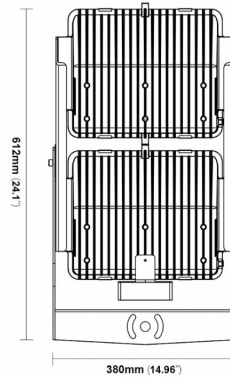
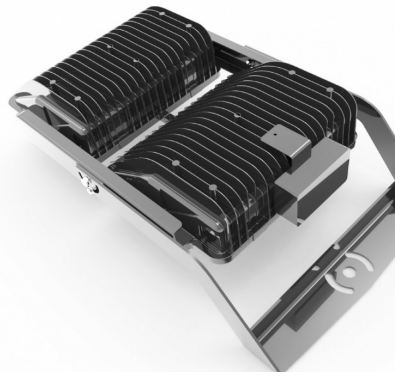


G3 1x



Systemeffekt:	200W
Ljusflöde:	24 000lm
Vikt:	9kg

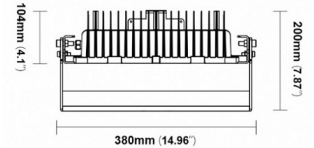
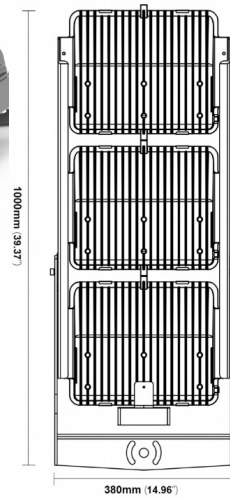
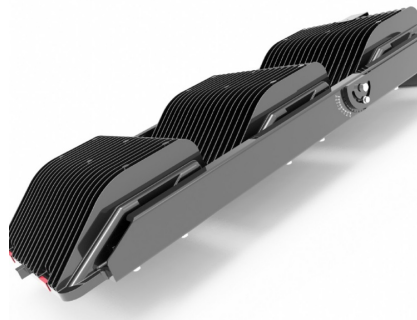
G3 2x



Systemeffekt:
Ljusflöde:
Vikt:

300W / 400W
36 000lm / 48 000lm
16kg

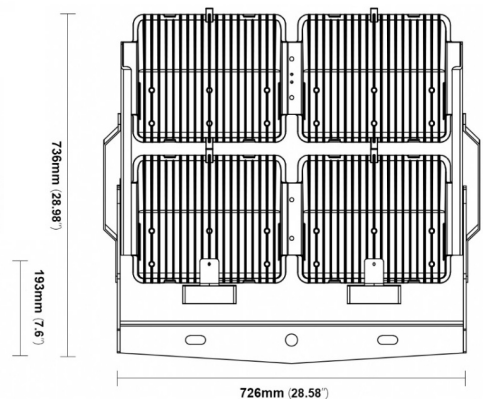
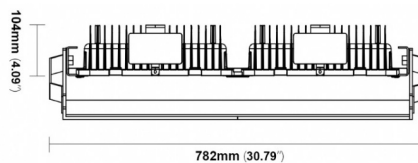
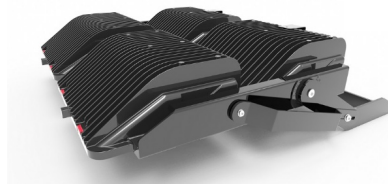
G3 3x



Systemeffekt:
Ljusflöde:
Vikt:

500W / 600W
60 000lm / 72 000lm
18kg

G3 4x



Systemeffekt:
Ljusflöde:
Vikt:

800W / 1000W
96 000lm / 120 000lm
22kg